



System 3000 VB6

Weighbridge Application

More User definable options

You can change the features you use.

On Screen Pending List

Easier for Weighbridge Operator

On Screen quick Keyboard options

Easier/Faster Access to functions

Add Extra

One transaction for Weight, Tyres, Fridges etc

Cash up on Commercial Screen

Faster and more detail

Upper and Lower Grid reference

Keep track of disposal areas

Reversal Transaction

Weighbridge Operator immediate corrections

On Screen Wizard

Find steps without calling the office

More details/Clearer Screen

Easier to train and use

Restricted Customer Products

Restrict Operator error and details

SQL internal queries

Industry standard SQL used throughout system

Access 2000, 2002, 2003, 2007 Support

Latest Microsoft versions

Refuse Entry to Landfill if no Credit (Usually just a warning)

Full control from the Office

No Negative Weights

Reduce Operator error

Customisable Tare Warning Days

Warn for Tare expiry when you need it

Option of Product Name or Product ID list

Keep your existing structure

Easy Weighbridge Indicator configuration

In case of Indicator failure or replacement

Forced References

Reduce Operator Error

Customer Specific required References

Force detail entry

Ability to not display/print any pricing

Pricing confidentiality assured

Multiple Printing options

Specify different inward and outward printers

Dual Monitor Customer Display

Low cost customer display to show charges

The screenshot shows a software interface for a weighbridge application. The title bar reads 'Hamilton Organic' and 'Pending'. The interface includes several buttons on the left: 'Pending', 'Auto Id', 'Payment', 'Reference', 'Confirm', 'Add Extra', 'OK', and 'Cancel'. The main area contains the following fields and information:

- Vehicle:** WFT (with a 'No Narrative Loaded' note)
- Customer:** Arborline Products Ltd (with account details: Arborline Products Ltd, PO Box 900, Waikiki, Account, and a Gilbarco Veeder-Root logo)
- Product:** (with a 'Normal Price' of \$44.44 per item)
- In:** 07/06/2007 19:49:06 (with a weight of 0 Kg)
- Out:** (with a weight of 0 Kg)
- Charges:** \$0.00 (with a total of \$0.00)

At the bottom, there is a note: 'The Weighing Panel displays the Weighing information such as Weight In, Weight Out and Net Weight' and 'No Pending Record or Stored Tare'. A row of buttons at the bottom includes 'Repeat', 'Pending', 'Cash Up', 'Reversal', and 'End Shift'.



Ralph Williams
Phone 04-5604823



System 3000 VB6

Office Application

New Operator Interface

More web like

Extended reporting Features

Extra details and references

Enhanced Office (Excel) Integration

Send data directly to an Excel spreadsheet

Access 2000, 2002, 2003, 2007 Support

Latest Microsoft versions

Restricted Customer Products

Force operator to only use the correct or licensed product

Special Customer Product Pricing

Different price structure for different customers

Transaction Fee

A fee for each transaction recorded

SQL Import/Export

*Send data to/from Weighbridge immediately ***

FTP File Transfer option

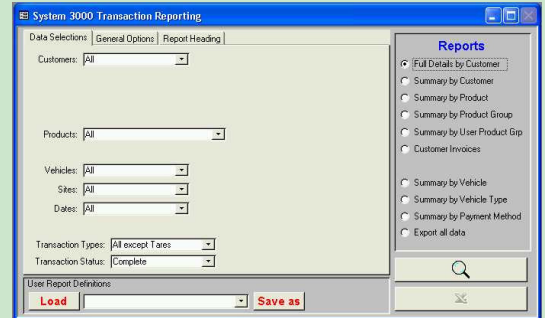
Send data to/from FTP Site

Weekly/Monthly Invoicing options

Send billing when required

Debtors Code separate from Customer Id

Send Accounts for multiple system accounts to one debtors address



Peripherals

No Sentry

Use industry common Peripheral Box

Option of Weighbridge Controller Software

Software

PortReader – Interface between the Weighbridge Application and the Weighbridge Indicator. Facilitates easy indicator swapping.

POKInterface – Interface between Barrier Arms, Traffic Lights etc. facilitates easy configuration of remote peripherals

WFTController – Software to Control different system options and requirements. I.e. Automatic indicator for when the Weighbridge is on Zero

*** requires specific network topology



Ralph Williams
Phone 04-5604823